



A NEW BEGINNING IN PITÄJÄNMÄKI

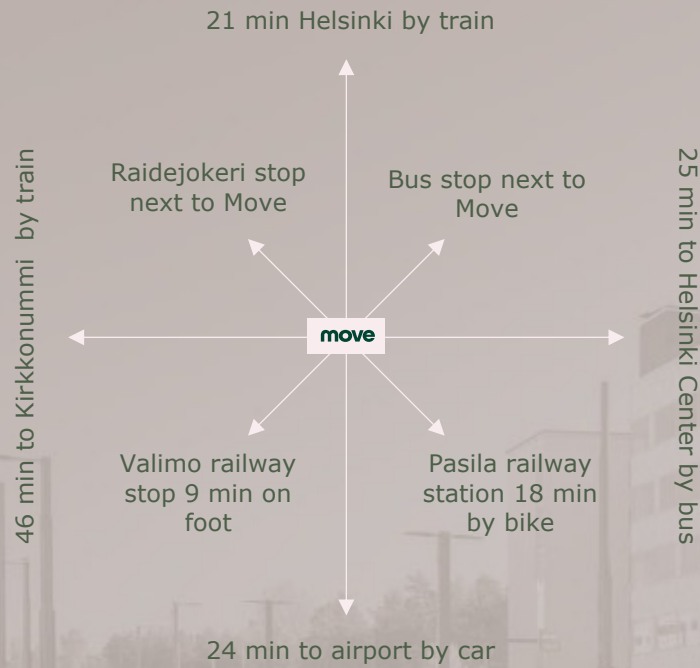
move

Kutomotie 2, Pitäjänmäki

SUPERB LOCATION



SUPERB CONNECTIONS





MODERN QUALITY BUILDING

move

MOVE TODAY

Move is situated in a central and highly visible location along the renovated Pitäjänmäentie, at the intersection of Kutomotie and Valimotie, near the Vihdintie traffic circle. Additionally, the Light Rail line 15 stops in front of Move.

A fresh modern building one of the newest in the area, Move offers flexible office spaces with services and sport facilities that support the wellbeing of tenant employees.

With sustainability and energy efficiency as part of Move's wellbeing values, LEED certification is already in place.

Move has 6 floors above the ground and 3 floors underneath with two wings. The building offers 10 000 sqm of leasable space and 200 parking spaces in its own warm and bright garage. Good visitor parking is also available.





RENEWED MOVE

move

COZY AND FUNCTIONAL GROUND FLOOR

Move has been renovated to become even better. The entrance floor and lobby of Move were completely modernized in 2023. The renovation utilized sustainable and biophilic materials and solutions, creating a cozy and impressive entrance environment. An open connection was established from the lobby to the restaurant areas, which also serve as a lounge for all tenants throughout the day.

RENEWAL OF SERVICES

- The renewal of restaurant services in November 2023
- The renovation of the popular Elixia gym in the summer of 2024
- Renewal of meeting services and catering in 2023
- Electric car charging stations in 2023
- Improved facilities for cyclists: changing rooms, shower facilities, and storage areas will be renovated
- Cozy terrace area in Move's courtyard in spring 2024



MOVE'S NEW RESTAURANT PAUSE

Move's new restaurant Pause opened in November 2023. Pause's versatile and healthy lunch buffet has achieved great popularity since the opening.

Pause also offers a refreshing breakfast and a variety of snacks 24/7. During office hours, the restaurant facilities are open to everyone and they serve as a cozy lounge for Move tenants in the evenings and on weekends as well.

The environment of the restaurant area was also completely renovated with the new Home concept by the food service provider, Compass Group.

The meeting catering options also became more diverse. Meeting rooms and catering can be conveniently booked with a single reservation through Compass Group's Asio system.

Sustainability and healthiness are fundamental values of Move's restaurant services.



ALL NECESSARY SERVICES

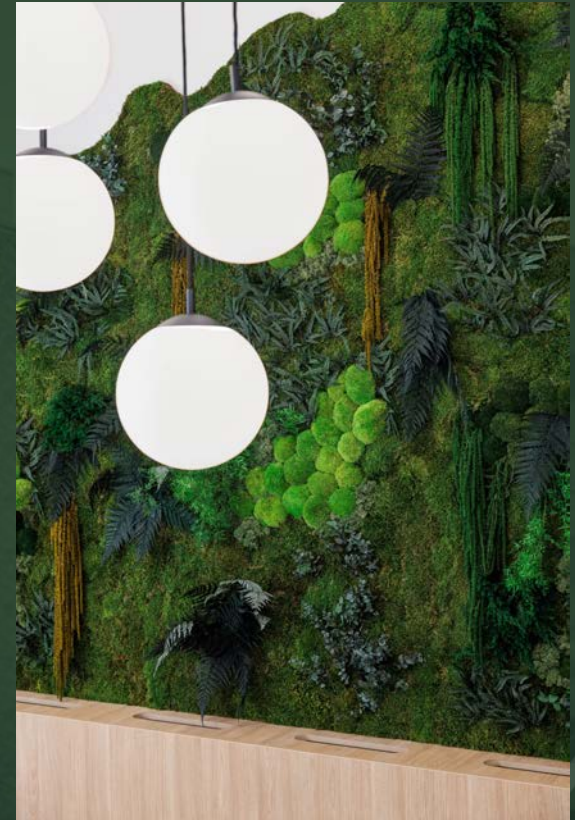
Move provides all the necessary services for a successful workday. Move takes care of your employees' well-being and attracts them to come to the office.

The lobby service warmly welcomes you. In addition to Pause, Move also houses a Subway restaurant, which is open every day until 10:00 PM.

In Move, you'll also find the popular gym by Elixia, which will be renovated in the summer of 2024. As one of Finland's favorite gym chains, it offers everything from strength and cardio training to group fitness and mindfulness.

Meeting rooms equipped with the latest technology. Parking space for staff and customers. Charging stations. Bicycle parking and shower facilities for cyclists.





MOVE WELCOMES YOU TO A GOOD WORKDAY!

move

MOVE IS ALREADY
HOME TO MANY
QUALITY BRANDS



250 - 2000 sqm IN ONE FLOOR

The spaces available range from 250 sqm to 2000 sqm. The spaces and their layout are extremely flexible and can be tailored to meet the individual needs of the tenant and their employees.

We will work together to find the optimal solution and tenants will have access to free architectural layout and design services.

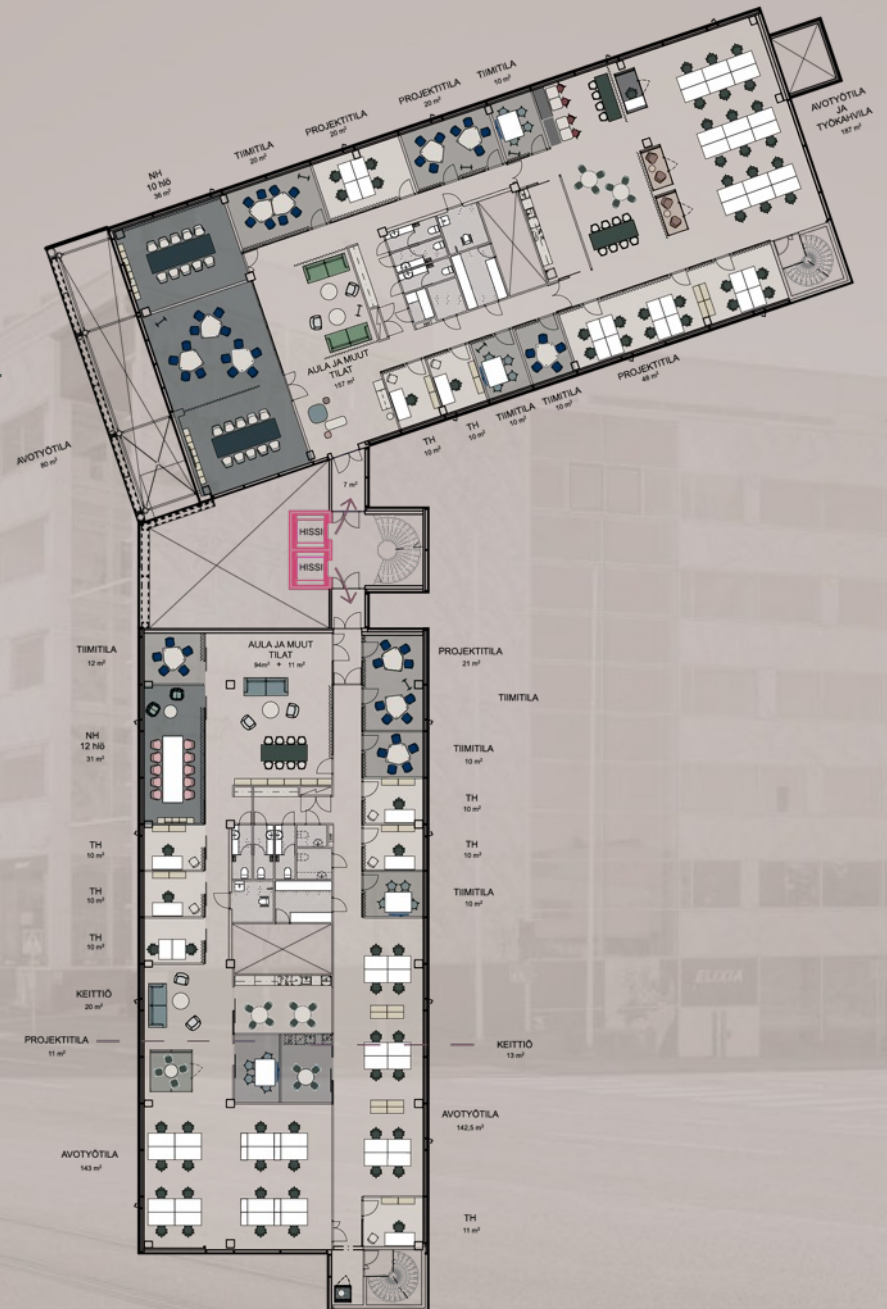
For the renovation of Move's office spaces, a dedicated Design Guide has been created, and the works according to it are carried out at the expense of the landlord.

For more information:

Outi Kymäläinen, Asset Manager

outi.kymalainen@trevian.fi

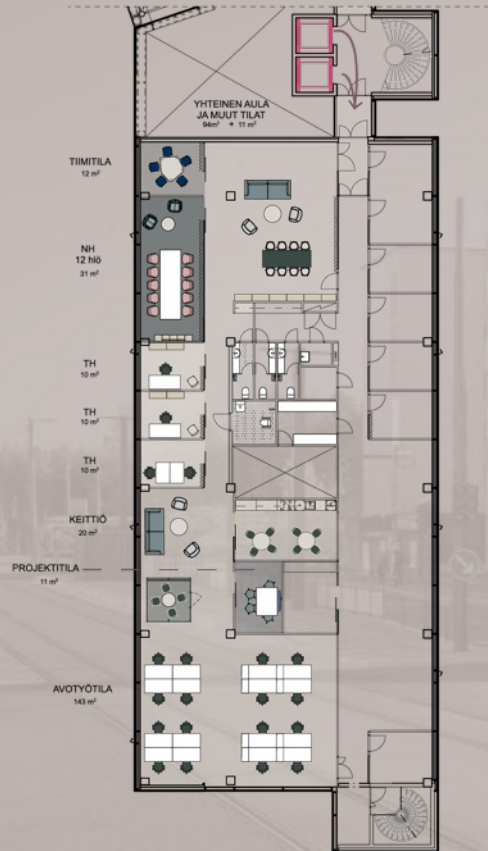
1267 sqm 2nd floor



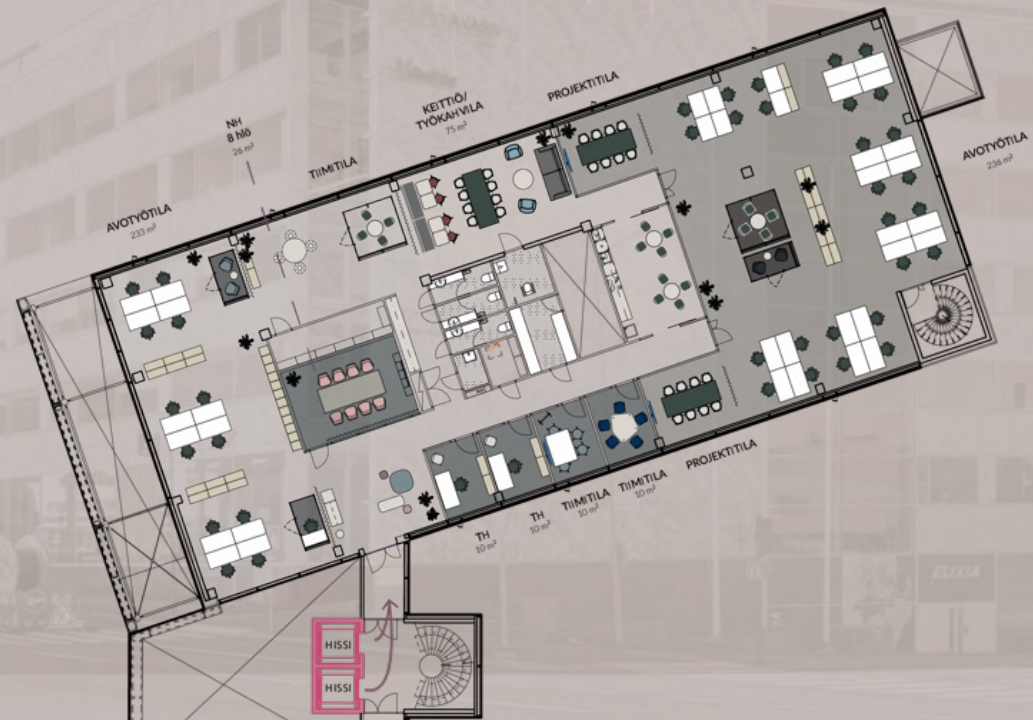
250 - 2000 sqm IN ONE FLOOR

See all available spaces:
www.movepitajanmaki.fi

352 sqm 2nd floor



658 sqm 5th floor





**MOVE'S INTERIOR DESIGNERS ARE AVAILABLE -
LEASED SPACES WILL BE RENOVATED WITH
QUALITY**

MOVE IN NUTSHELL

PROPERTY SERVICES:

Professional reception services

Catering

Restaurants

Café & 24/7 lounge

Gym

Group fitness classes

Meeting rooms

Daily maintenance

Bicycle parking and shower facilities

Courtyard terrace (coming soon)

PARKING:

Indoor and outdoor parking

Guest parking in the yard

Charging stations for electric cars

PUBLIC TRANSPORT:

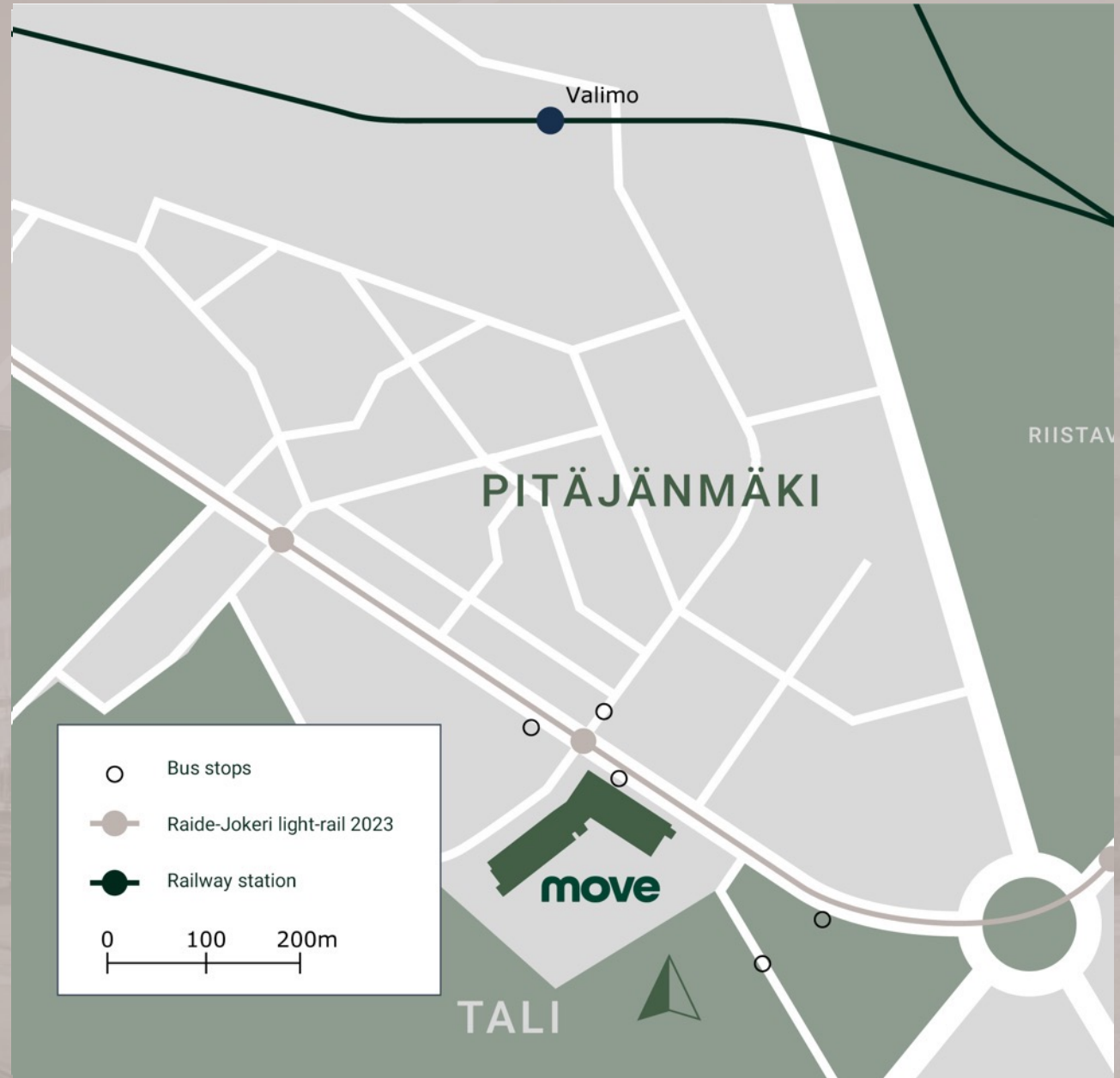
Bus stop 1 minute

Raide-Jokeri light-rail 1 minute

Railway station 9 minutes

Airport 24 minutes

Cty center 21 minutes



move

MORE INFORMATION:

Outi Kymäläinen

Trevian Asset Management

p. 0400 311 149

outi.kymalainen@trevian.fi

TREVIAN

