

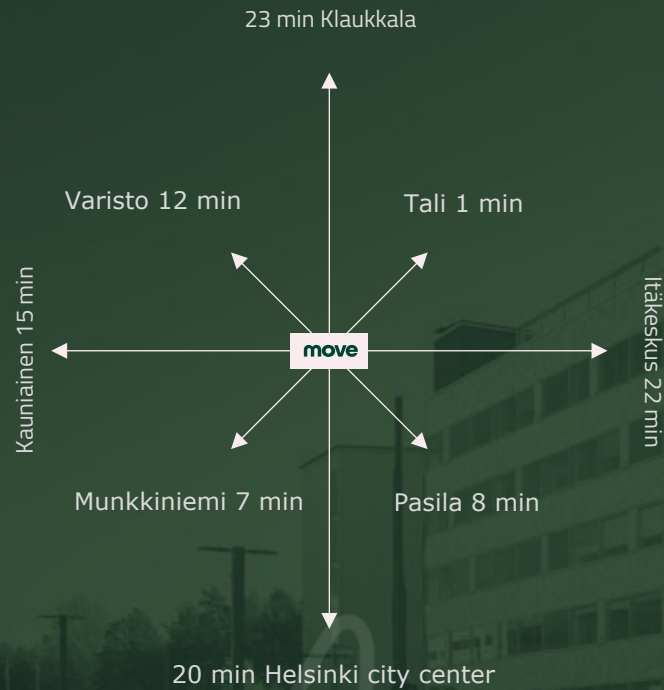


A NEW BEGINNING IN PITÄJÄNMÄKI

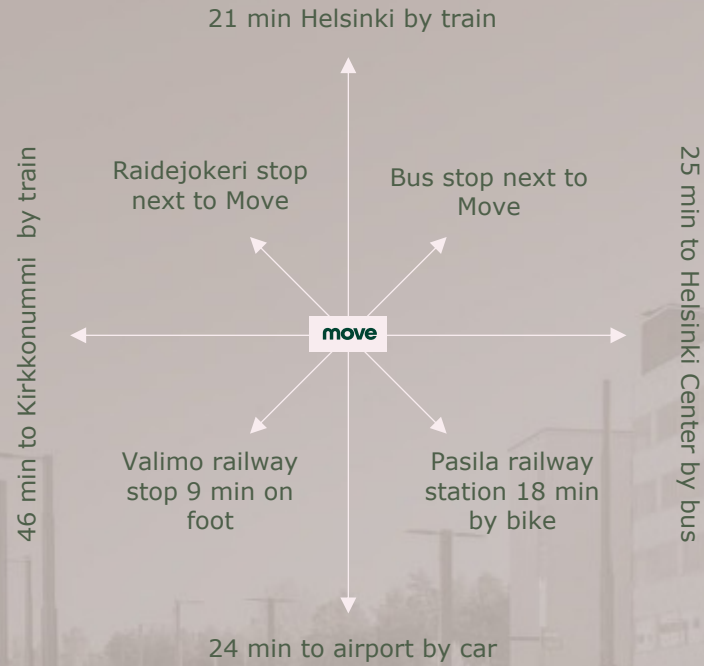
move

Kutomotie 2, Pitäjänmäki

SUPERB LOCATION



SUPERB CONNECTIONS





MODERN QUALITY BUILDING

move

MOVE TODAY

Move is centrally located on the recently renewed main boulevard that divides old Pitäjänmäki from the new developing Tali area.

A fresh modern building one of the newest in the area, Move offers flexible office spaces with services and sport facilities that support the wellbeing of tenant employees.

With sustainability and energy efficiency as part of Move's wellbeing values, LEED certification is already in place and the application process for Breeam is underway

Move has 6 floors above the ground and 3 floors underneath with two wings. The building offers 10 000 sqm of leasable space and 200 parking spaces in its own warm and bright garage. Good visitor parking is also available.



SERVICES TODAY

Reception service with friendly staff

Spacious lunch restaurant

Catering

Subway sandwich restaurant serves all day until 22.00

Elixia, one of the most popular gym chains in Finland, offers everything from resistance and cardio training to mindfulness group sessions

Meeting rooms with new technical equipment

Employee and guest parking

Bicycle storages and showers





UPCOMING RENEWAL PROJECTS FOR 2023

move

MAKE A BETTER MOVE TO MOVE

Renewal by Scope Design and PES architects.

SPRING 2023

New lobby and common areas.

- Better, more versatile restaurant services
- Renewed gym and wellness services
- - EV charging stations

NEXT

- New facilities for cyclists, showers, lockers, dressing rooms
- a new summer terrace in Move's large courtyard



RESTAURANT PAUSE WILL OPEN IN 11 / 2023

Move's new restaurant, Pause, is nearing completion with its plans. The construction work will begin in the summer, and we will be able to enjoy the new restaurant and many other modern food services by the end of October-November 2023.

The ambiance of the dining area will be completely renovated according to the cozy home concept of Compass Group, which is responsible for the food services.

VERSATILE FOOD SERVICES

- Well-being and versatility emphasized in lunch service
- Breakfast offerings
- Café and 24/7 take-away service includes healthy packaged meals
- Versatile catering options for the new lunch cabin, other meeting rooms, and tenant spaces

THE RESTAURANT
SERVES AS A 24 / 7
LIVING AND WORKING
SPACE FOR MOVE'S
TENANTS



MOVE IS ALREADY
HOME TO MANY
QUALITY BRANDS

ELIXIA

Punainen Risti 

SUBWAY

Flatpay

9LIVES

Valitut Palat
READER'S DIGEST

UUDENMAAN
MESTARI-RAKENTAJAT OY

aino



PIHMA

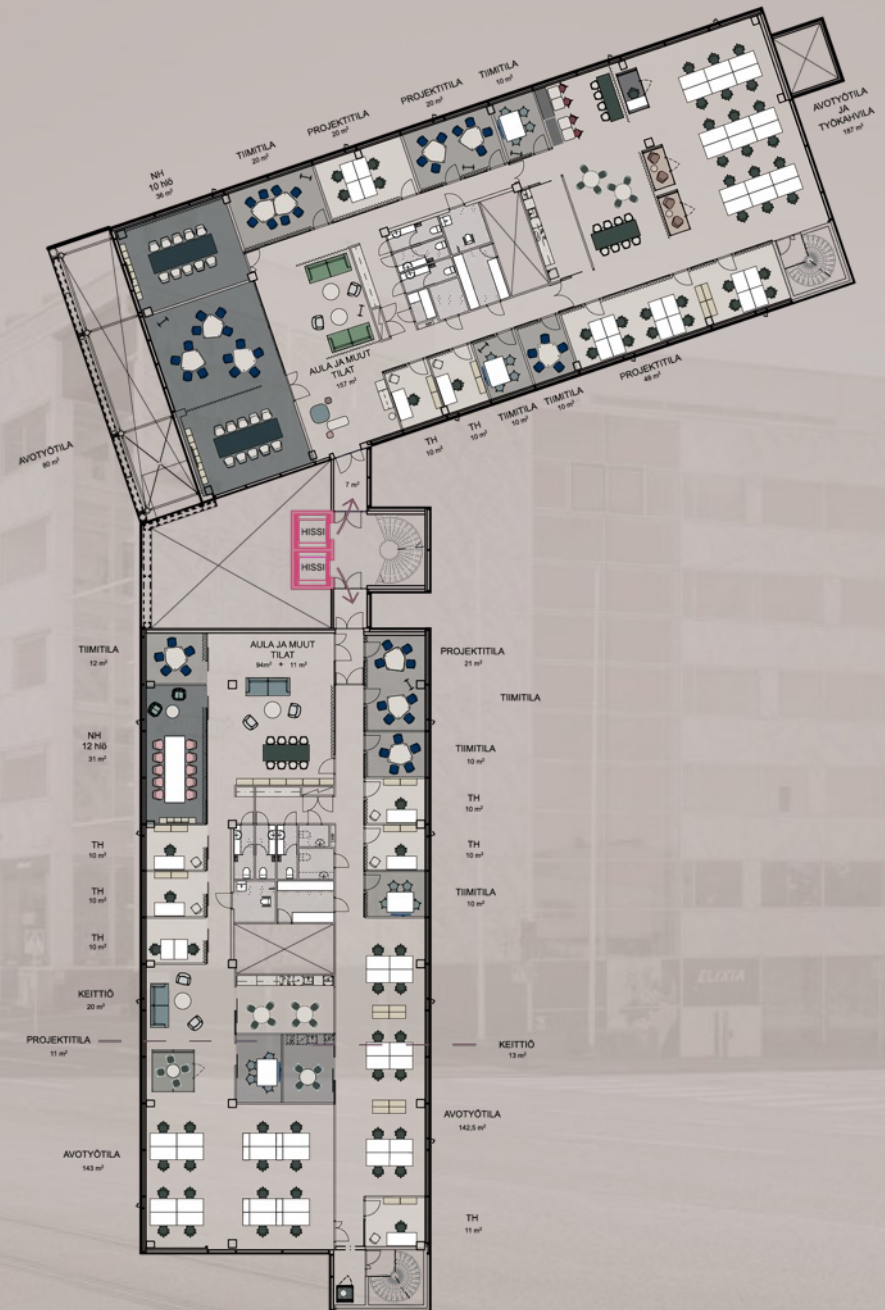


200 - 1250 m² IN ONE FLOOR

The spaces available range from 200 m² to 2500 m². The spaces and their layout are extremely flexible and can be tailored to meet the individual needs of the tenant and their employees. We will work together to find the optimal solution and tenants will have access to free architectural layout and design services.

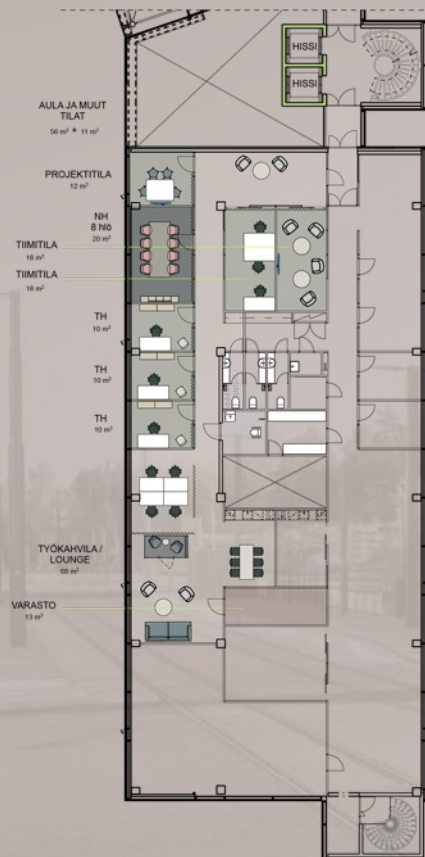
To find out more contact Asset Manager Outi Kymäläinen at outi.kymalainen@trevian.fi

1267 m² 2nd floor

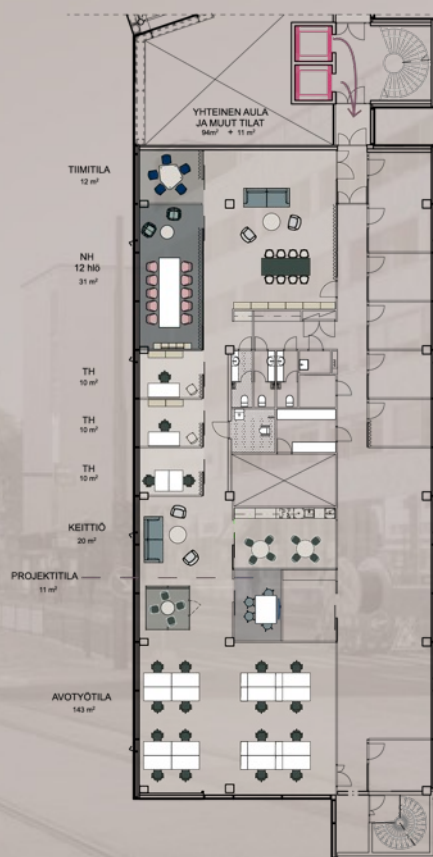


200 - 1250 m² IN ONE FLOOR

251 m² 5th floor



352 m² 2nd floor



658 m² 3rd floor



MOVE IN NUTSHELL

PROPERTY SERVICES:

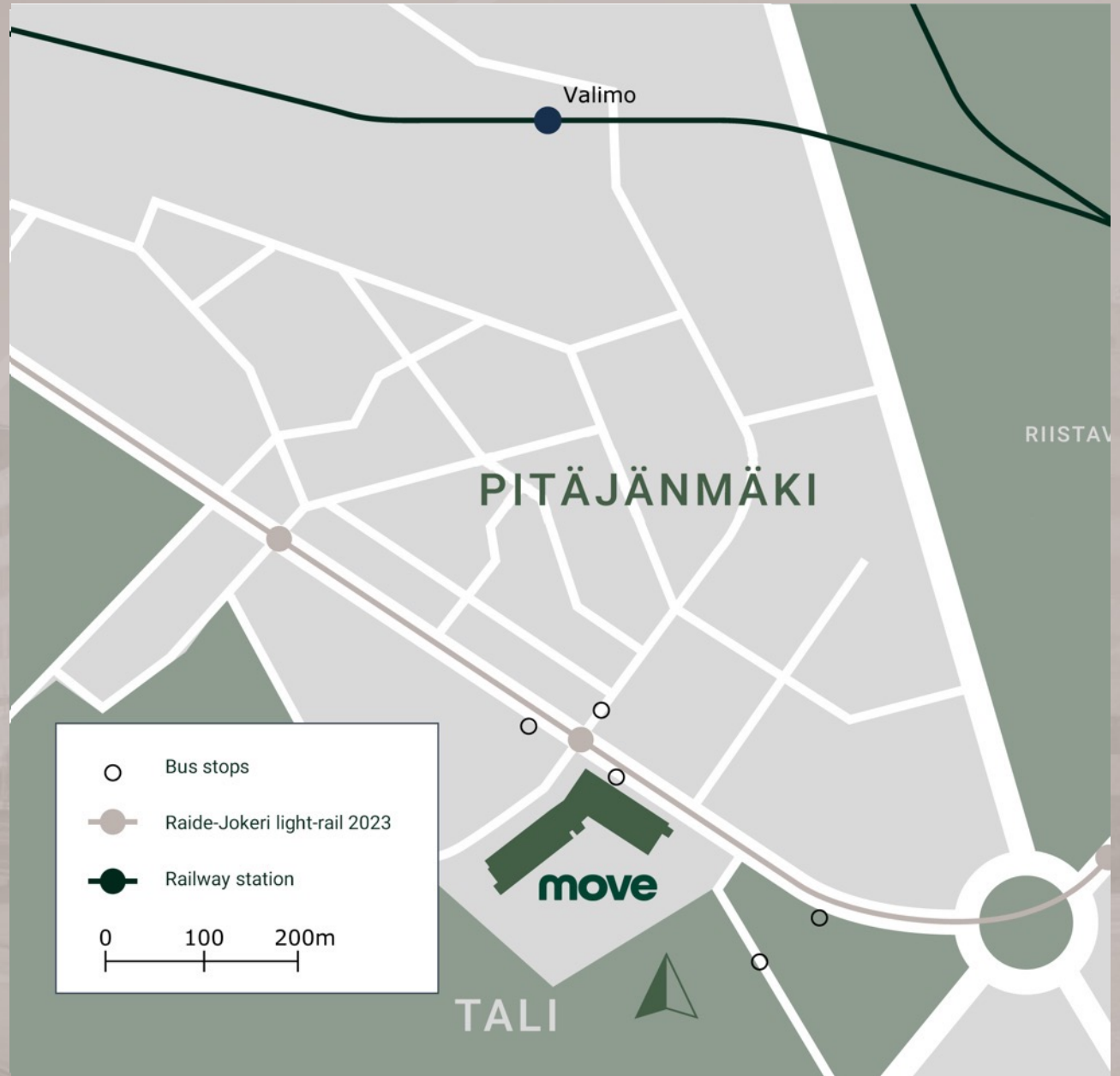
Professional reception services
Catering
Restaurants
Gym
Meeting rooms
Property Manager
Daily maintenance

PARKING:

Indoor and outdoor parking.
Guest parking in the yard.
Charging stations for electric cars
(coming soon)

PUBLIC TRANSPORT:

Bus stop 1 minute
Raide-Jokeri light-rail 1 minute (coming soon)
Railway station 9 minutes
Airport 24 minutes
Cty center 21 minutes



move

LISÄÄ TIETOA:

Outi Kymäläinen

Trevian Asset Management

p. 0400 311 149

outi.kymalainen@trevian.fi

TREVIAN

