



A NEW BEGINNING IN PITÄJÄNMÄKI

**move**

Kutomotie 2, Pitäjänmäki

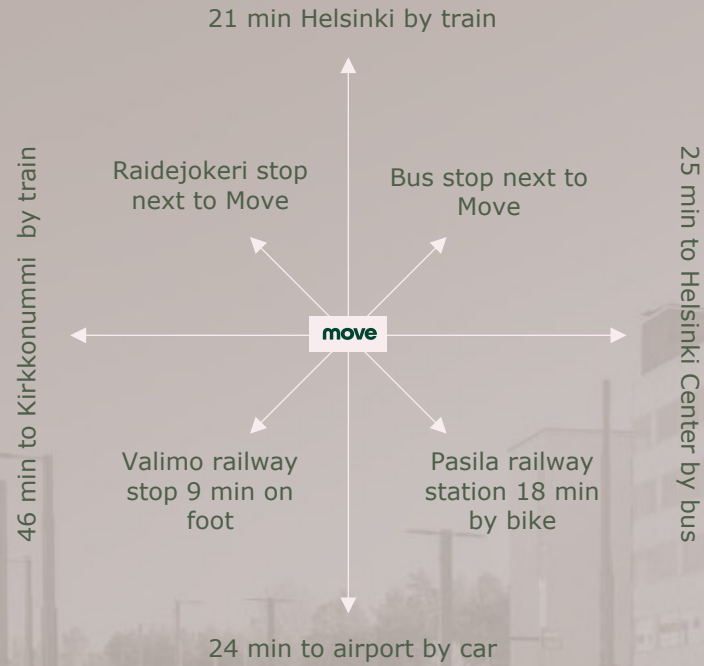


# SUPERB LOCATION





# SUPERB CONNECTIONS





MODERN QUALITY BUILDING

**move**



## MOVE TODAY

Move is centrally located on the recently renewed main boulevard that divides old Pitäjänmäki from the new developing Tali area.

A fresh modern building one of the newest in the area, Move offers flexible office spaces with services and sport facilities that support the wellbeing of tenant employees.

With sustainability and energy efficiency as part of Move's wellbeing values, LEED certification is already in place and the application process for Breeam is underway

Move has 6 floors above the ground and 3 floors underneath with two wings. The building offers 10 000 sqm of leasable space and 200 parking spaces in its own warm and bright garage. Good visitor parking is also available.





# SERVICES TODAY

Reception service with friendly staff

Spacious lunch restaurant

Catering

Subway sandwich restaurant serves all day until 22.00

Elixia, one of the most popular gym chains in Finland, offers everything from resistance and cardio training to mindfulness group sessions

Meeting rooms with new technical equipment

Employee and guest parking

Bicycle storages and showers





UPCOMING RENEWAL PROJECTS FOR 2023

**move**



# MAKE A BETTER MOVE TO MOVE

Renewal by Scope Design and PES architects.

## SPRING 2023

New lobby and common areas.

- Better, more versatile restaurant services
- Renewed gym and wellness services
- - EV charging stations

## NEXT

- New facilities for cyclists, showers, lockers, dressing rooms
- a new summer terrace in Move's large courtyard





MOVE IS ALREADY  
HOME TO MANY  
QUALITY BRANDS

**ELIXIA**

Punainen Risti 

**SUBWAY**

DivestGroup

**9LIVES**

Valitut Palat  
READER'S DIGEST

 **AVARN**  
Security

**aino**

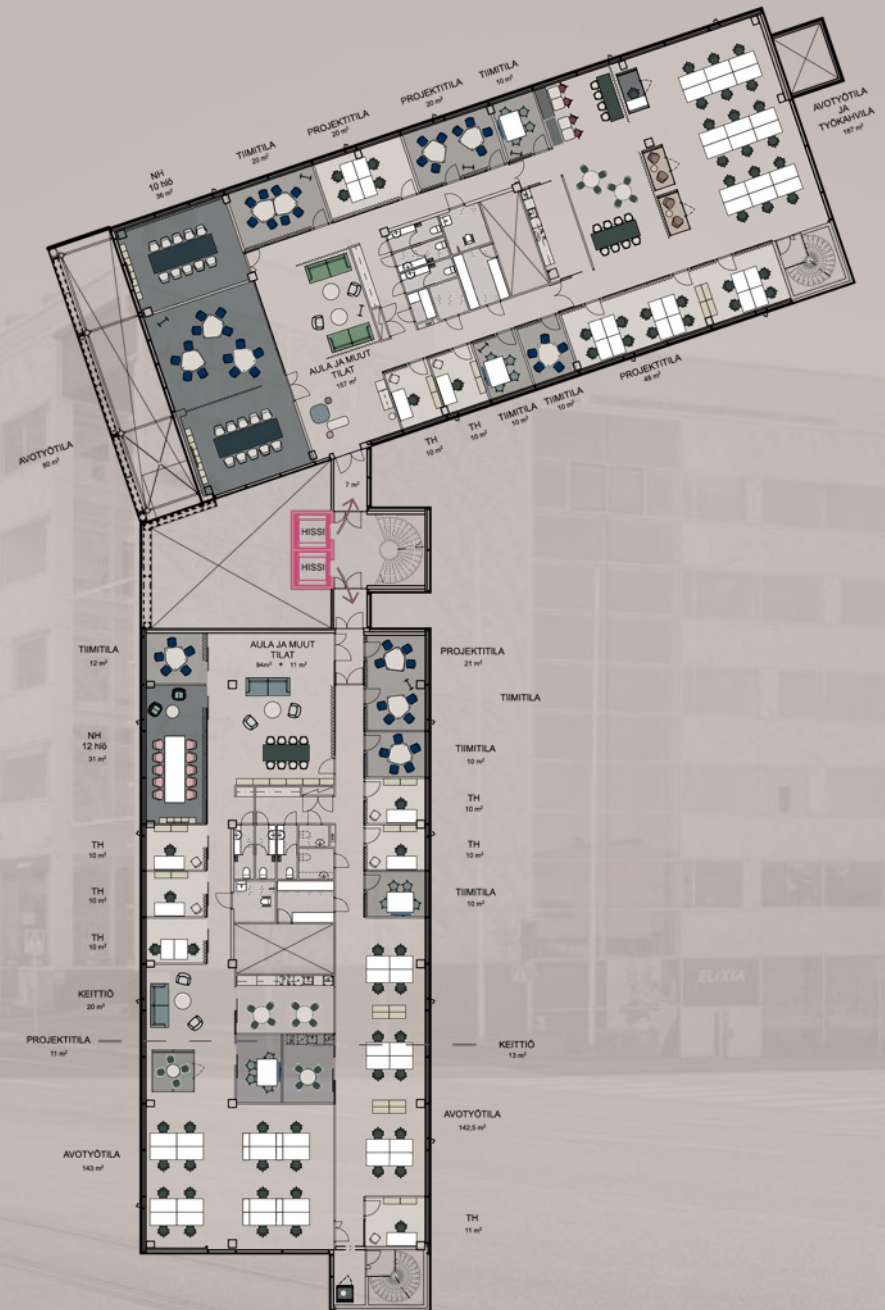


## 200 - 1250 m<sup>2</sup> IN ONE FLOOR

The spaces available range from 200 m<sup>2</sup> to 2500 m<sup>2</sup>. The spaces and their layout are extremely flexible and can be tailored to meet the individual needs of the tenant and their employees. We will work together to find the optimal solution and tenants will have access to free architectural layout and design services.

To find out more contact Asset Manager Outi Kymäläinen at [outi.kymalainen@trevian.fi](mailto:outi.kymalainen@trevian.fi)

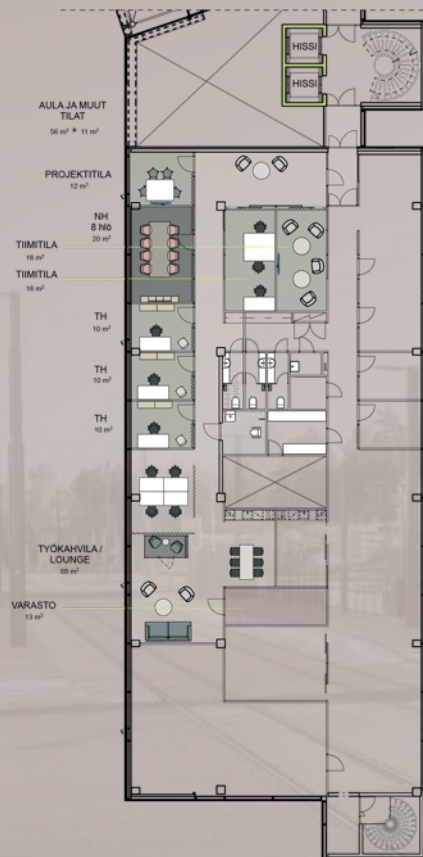
### 1267 m<sup>2</sup> 2nd floor



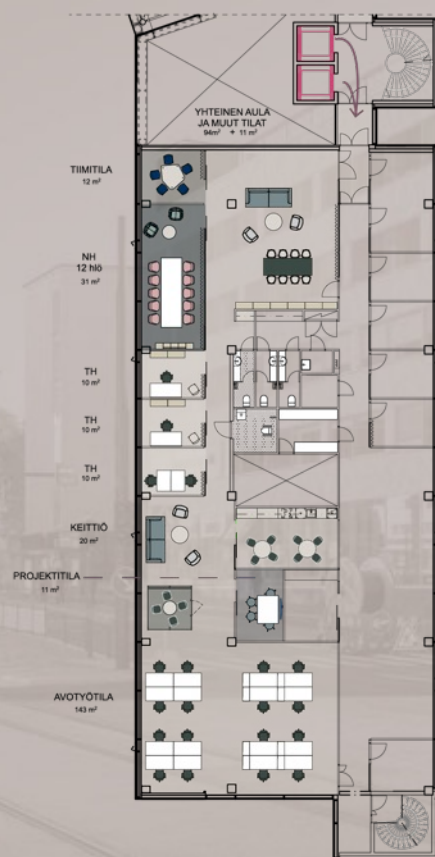


# 200 - 1250 m<sup>2</sup> IN ONE FLOOR

251 m<sup>2</sup> 5th floor



352 m<sup>2</sup> 2nd floor



658 m<sup>2</sup> 3rd floor



# MOVE IN NUTSHELL

## PROPERTY SERVICES:

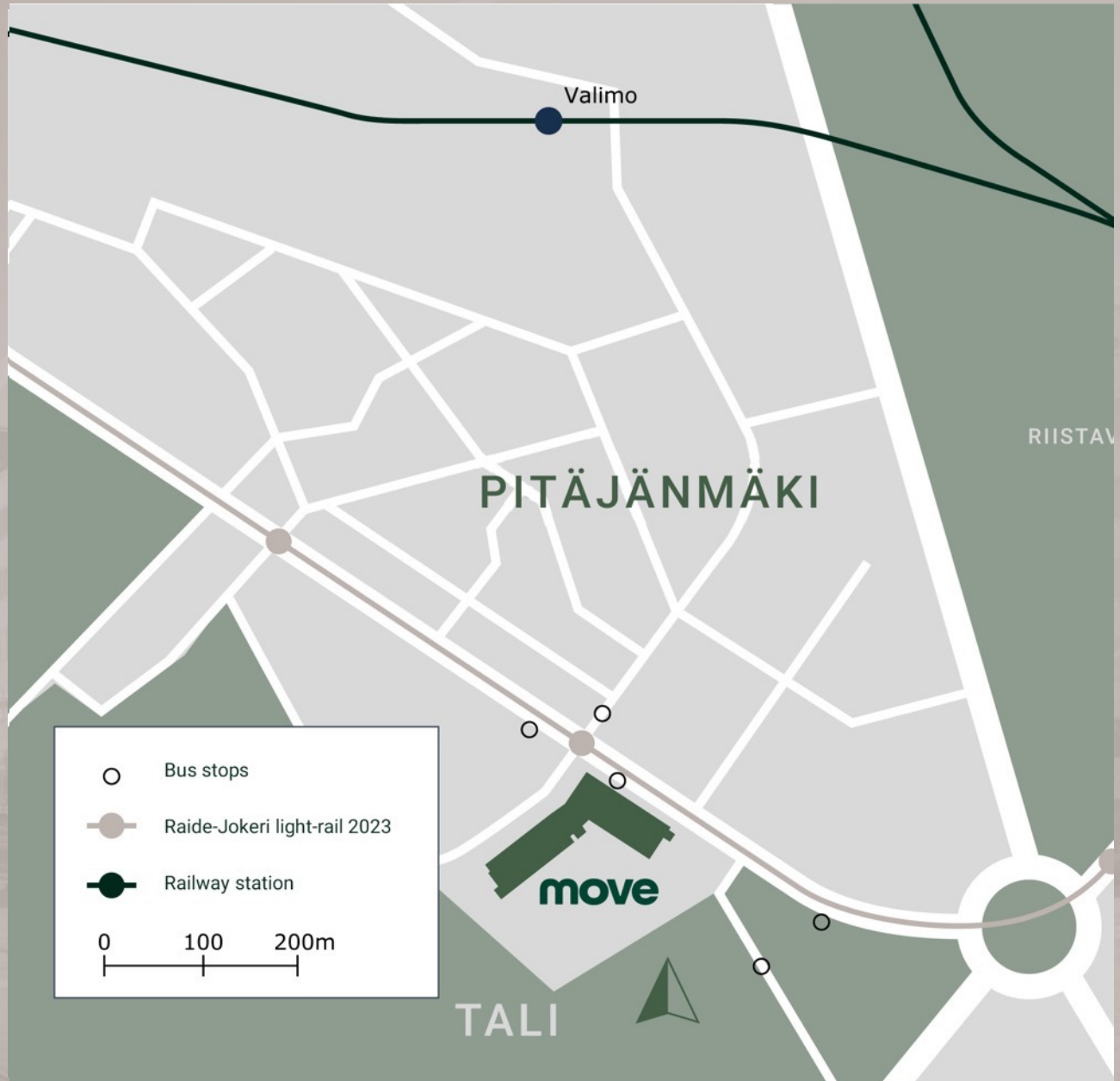
Professional reception services  
Catering  
Restaurants  
Gym  
Meeting rooms  
Property Manager  
Daily maintenance

## PARKING:

Indoor and outdoor parking.  
Guest parking in the yard.  
Charging stations for electric cars  
(coming soon)

## PUBLIC TRANSPORT:

Bus stop 1 minute  
Raide-Jokeri light-rail 1 minute (coming soon)  
Railway station 9 minutes  
Airport 24 minutes  
Cty center 21 minutes





**move**

**LISÄÄ TIETOA:**

Outi Kymäläinen

Trevian Asset Management

p. 0400 311 149

[outi.kymalainen@trevian.fi](mailto:outi.kymalainen@trevian.fi)

**TREVIAN**

